

COMPANY PREVIEW



HMB
LINTECmarine



STAFF

ENGINEERING	31
PROJECT MANAGEMENT	6
PRODUCTION	68
QUALITY ASSURANCE	6
SERVICE	20
OTHERS	20

LOCATIONS

GDANSK

PROTEA HEAD OFFICE



KLUCZBORK

PROTEA ENGINEERING &
MANUFACTURING FACILITIES



HAMBURG

LINTEC MARINE HEAD OFFICE
Sales & Services



WROCLAW

PROTEA ENGINEERING



MANUFACTURING FACILITIES



49 000 m² of Manufacturing, Assembly, Painting & Testing Facilities

QUALITY

Lloyd's Register
LROA

CERTIFICATE SCHEDULE

Protea Sp. z o.o.
ul. Gałaktyczna 30A, 80-299 Gdańsk, Poland

Head office
ul. Gałaktyczna 30A
80-299 Gdańsk

Locations
ul. Okrzejska 18
80-208 Gdańsk, Łódź, Gdynia

Other locations
ul. Okrzejska 18
80-208 Gdańsk, Łódź, Gdynia

Activities
Supply of the engineering solutions for design, manufacturing and assembly of lifting, winching and similar material handling equipment, as well as the provision of the related technical assistance.

Activities
Supply of the engineering solutions for design, manufacturing and assembly of lifting, winching and similar material handling equipment, as well as the provision of the related technical assistance.

Original Approval 1st August 2004
Current Certificate 1st July 2015
Certificate expiry 1st August 2016

Original Certificate No. 0400021020

Page 1 of 1

Lloyd's Register
LROA

CERTIFICATE OF APPROVAL

This is to certify that the Quality Management System of:

Protea Sp. z o.o.
ul. Gałaktyczna 30A, 80-299 Gdańsk, Poland

has been approved by Lloyd's Register Quality Assurance to the following Quality Management System Standards:

ISO 9001:2008

The Quality Management System is applicable to:

Supply of the engineering solutions for design, manufacturing and assembly of lifting, winching and similar material handling equipment, as well as the provision of the related technical assistance.

This certificate is valid only if issued to and held by the addressee bearing the name, number and address of the addressee as shown on the certificate.

Original Approval 1st August 2004
Current Certificate 1st July 2015
Certificate expiry 1st August 2016

Original Certificate No. 0400021020

Page 1 of 1

DET NORSKE VERITAS
PRODUCT CERTIFICATE

Protea Sp. z o.o.
ul. Gałaktyczna 30A, 80-299 Gdańsk, Poland

Activities
Supply of the engineering solutions for design, manufacturing and assembly of lifting, winching and similar material handling equipment, as well as the provision of the related technical assistance.

Original Approval 1st August 2004
Current Certificate 1st July 2015
Certificate expiry 1st August 2016

Original Certificate No. 0400021020

Page 1 of 1

DET NORSKE VERITAS
PRODUCT CERTIFICATE

Protea Sp. z o.o.
ul. Gałaktyczna 30A, 80-299 Gdańsk, Poland

Activities
Supply of the engineering solutions for design, manufacturing and assembly of lifting, winching and similar material handling equipment, as well as the provision of the related technical assistance.

Original Approval 1st August 2004
Current Certificate 1st July 2015
Certificate expiry 1st August 2016

Original Certificate No. 0400021020

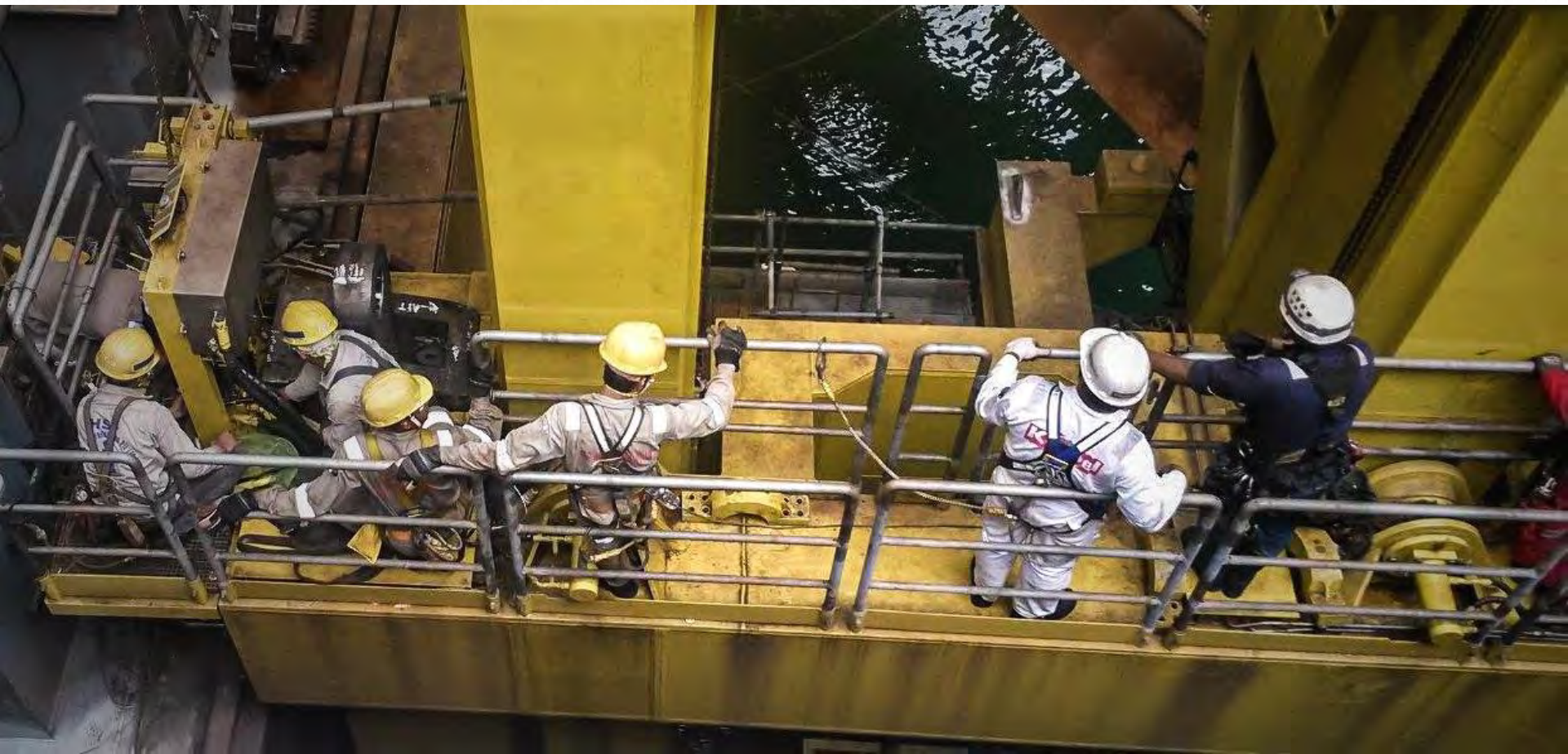
Page 1 of 1



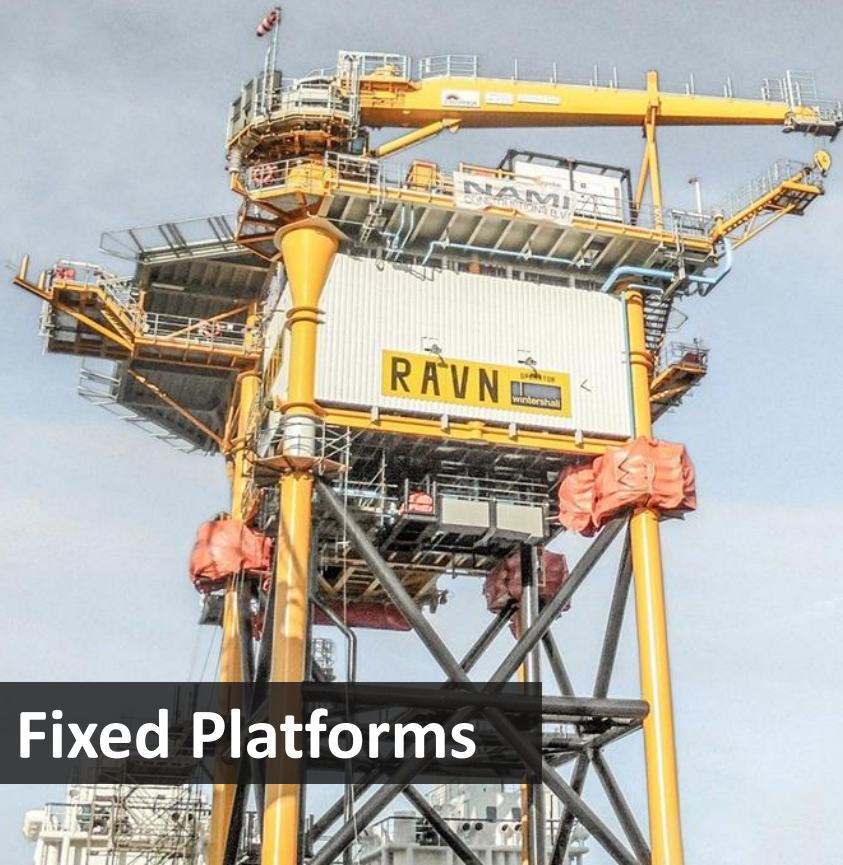
QUALITY



INDUSTRY SECTORS



INDUSTRY SECTORS



Fixed Platforms

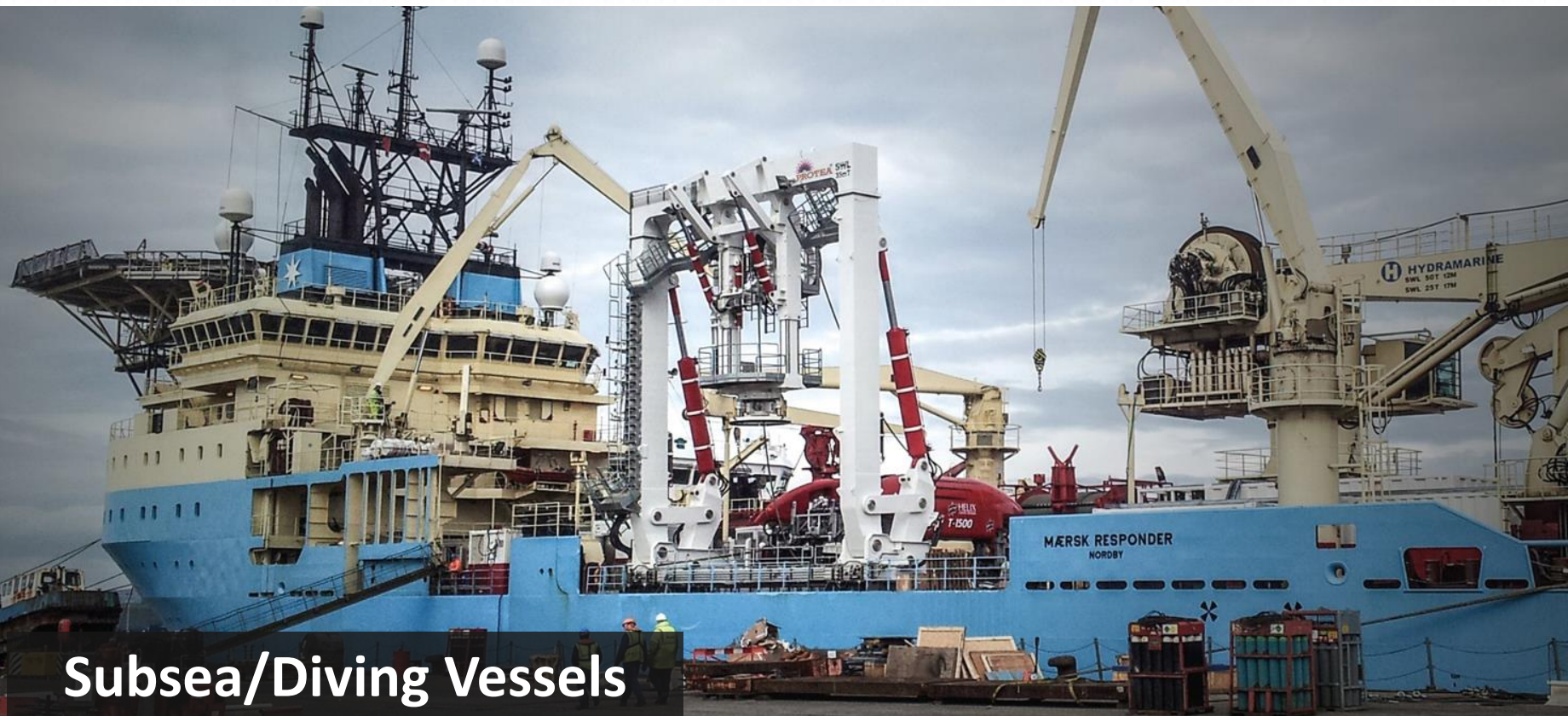


INDUSTRY SECTORS



Drilling Units

INDUSTRY SECTORS



Subsea/Diving Vessels

INDUSTRY SECTORS



Pipelay/Construction Vessels

INDUSTRY SECTORS



Marine & Cargo Vessels

INDUSTRY SECTORS

Offshore Wind



FOUR CORE BUSINESS SEGMENTS



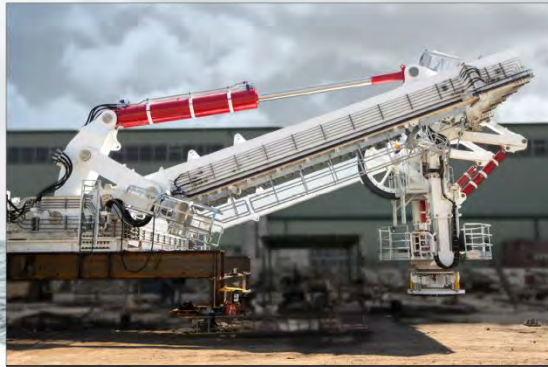
PEDESTAL CRANES



OVERHEAD & GANTRY CRANES

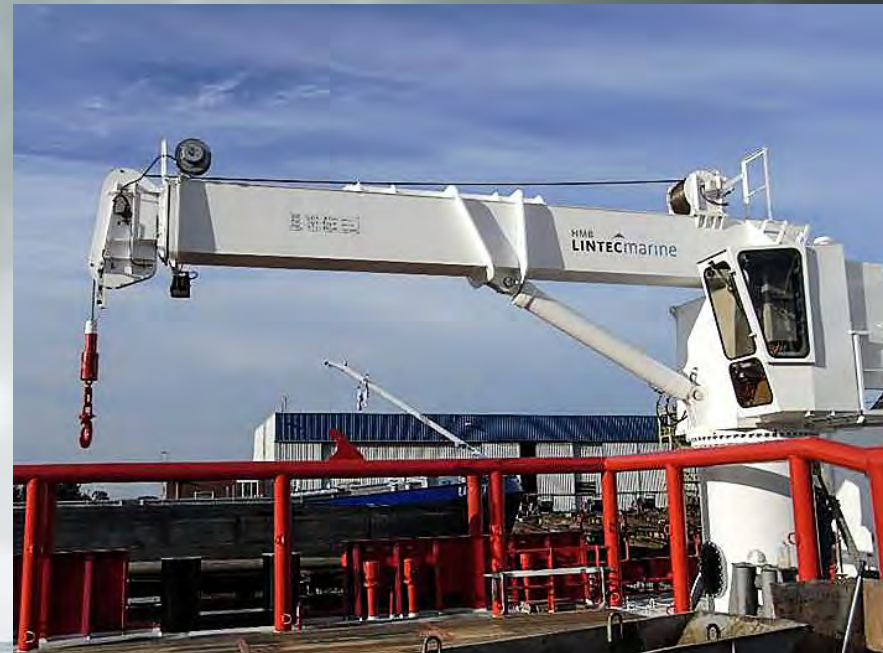


WINCHES



MECHANICAL HANDLING
SYSTEMS

FOUR CORE BUSINESS SEGMENTS – PEDESTAL CRANES



DAVIT / SERVICE CRANES

FOUR CORE BUSINESS SEGMENTS – PEDESTAL CRANES

MINE CRANES



FOUR CORE BUSINESS SEGMENTS – PEDESTAL CRANES



RAM LUFFING

FOUR CORE BUSINESS SEGMENTS – PEDESTAL CRANES



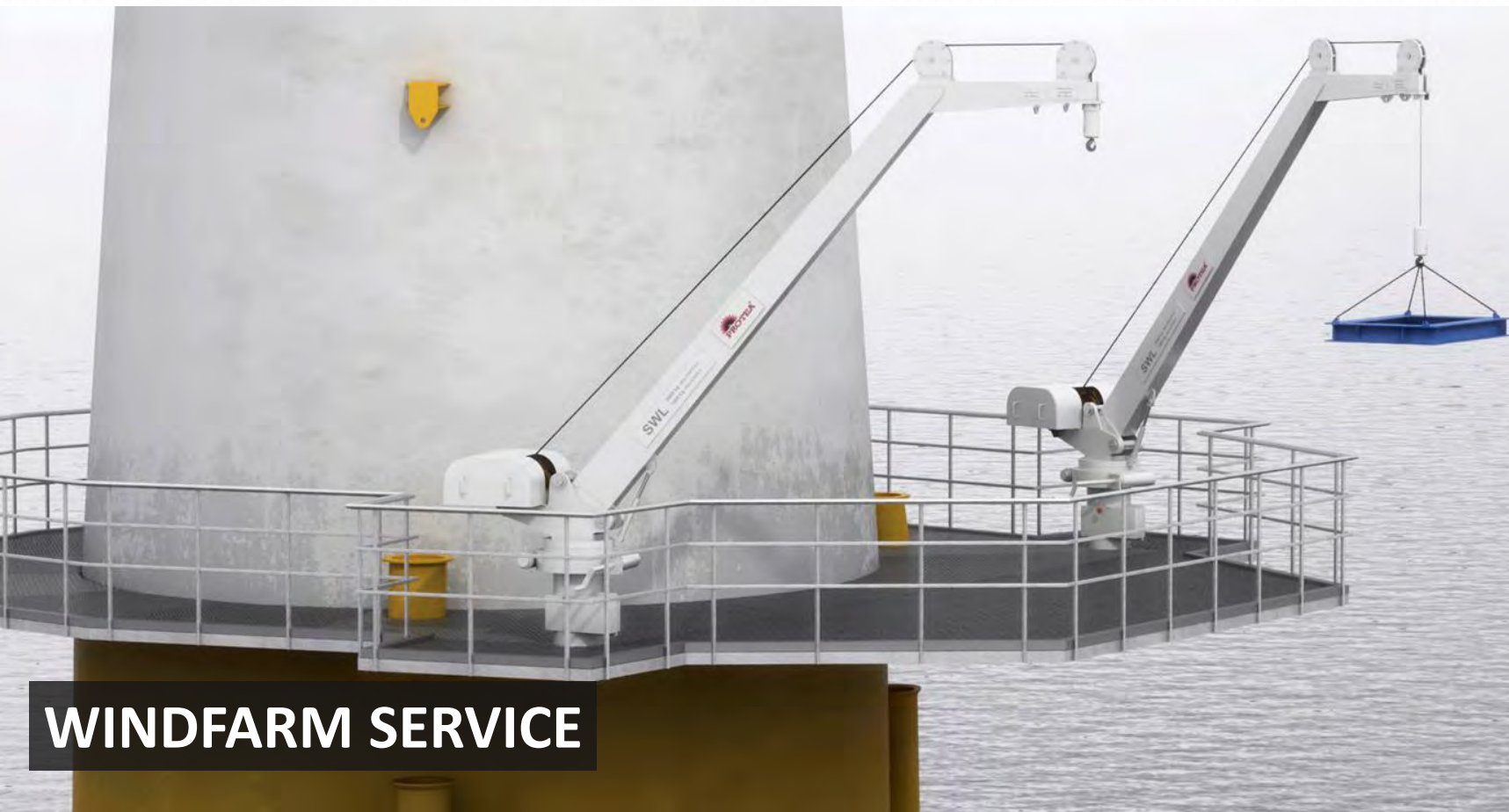
KNUCKLE-BOOM

FOUR CORE BUSINESS SEGMENTS – PEDESTAL CRANES

KING POST / SLEW BEARING



FOUR CORE BUSINESS SEGMENTS – PEDESTAL CRANES



WINDFARM SERVICE

FOUR CORE BUSINESS SEGMENTS – PEDESTAL CRANES

TELESCOPIC



FOUR CORE BUSINESS SEGMENTS – PEDESTAL CRANES

HEAVY LIFT



FOUR CORE BUSINESS SEGMENTS – PEDESTAL CRANES

MARINE CARGO

An aerial view of a large container ship sailing on the ocean. The ship's deck is covered with numerous stacked intermodal containers in shades of blue, orange, and red. Two large yellow pedestal cranes are positioned on the deck. One crane is lifting a large, white, cylindrical cargo unit from the deck. The ship's white superstructure and blue hull are visible. The background shows the dark blue sea with white-capped waves.

FOUR CORE BUSINESS SEGMENTS – OVERHEAD & GANTRY CRANES

GANTRY BOP



FOUR CORE BUSINESS SEGMENTS – OVERHEAD & GANTRY CRANES



SEMI GANTRY BOP

FOUR CORE BUSINESS SEGMENTS – OVERHEAD & GANTRY CRANES



OVERHEAD

FOUR CORE BUSINESS SEGMENTS – OVERHEAD & GANTRY CRANES



INDUSTRIAL GANTRY

FOUR CORE BUSINESS SEGMENTS – OVERHEAD & GANTRY CRANES



INDUSTRIAL OVERHEAD

FOUR CORE BUSINESS SEGMENTS – OVERHEAD & GANTRY CRANES



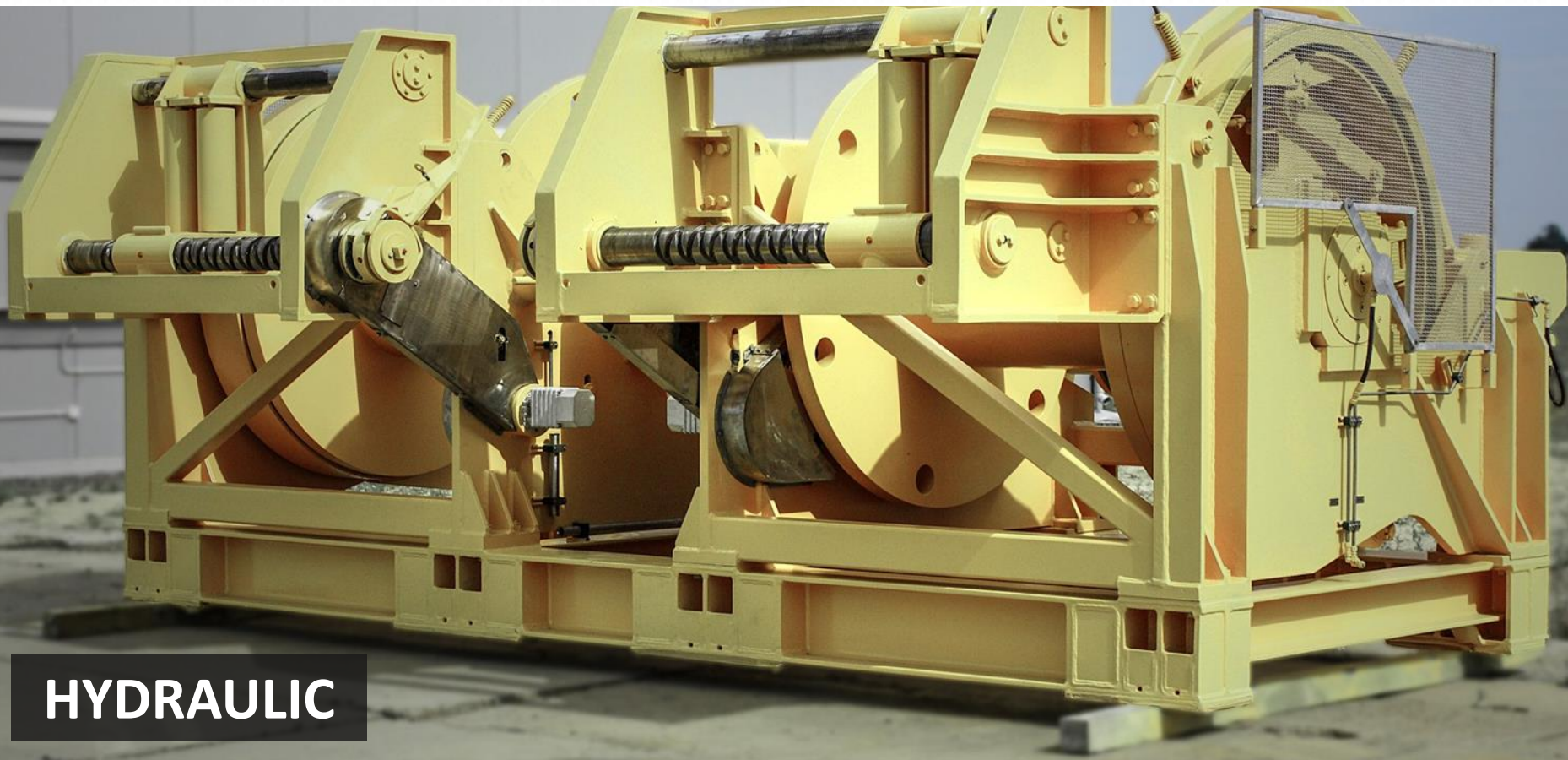
INDUSTRIAL JIB

FOUR CORE BUSINESS SEGMENTS – WINCHES: ANCHOR - MOORING - MANRIDING



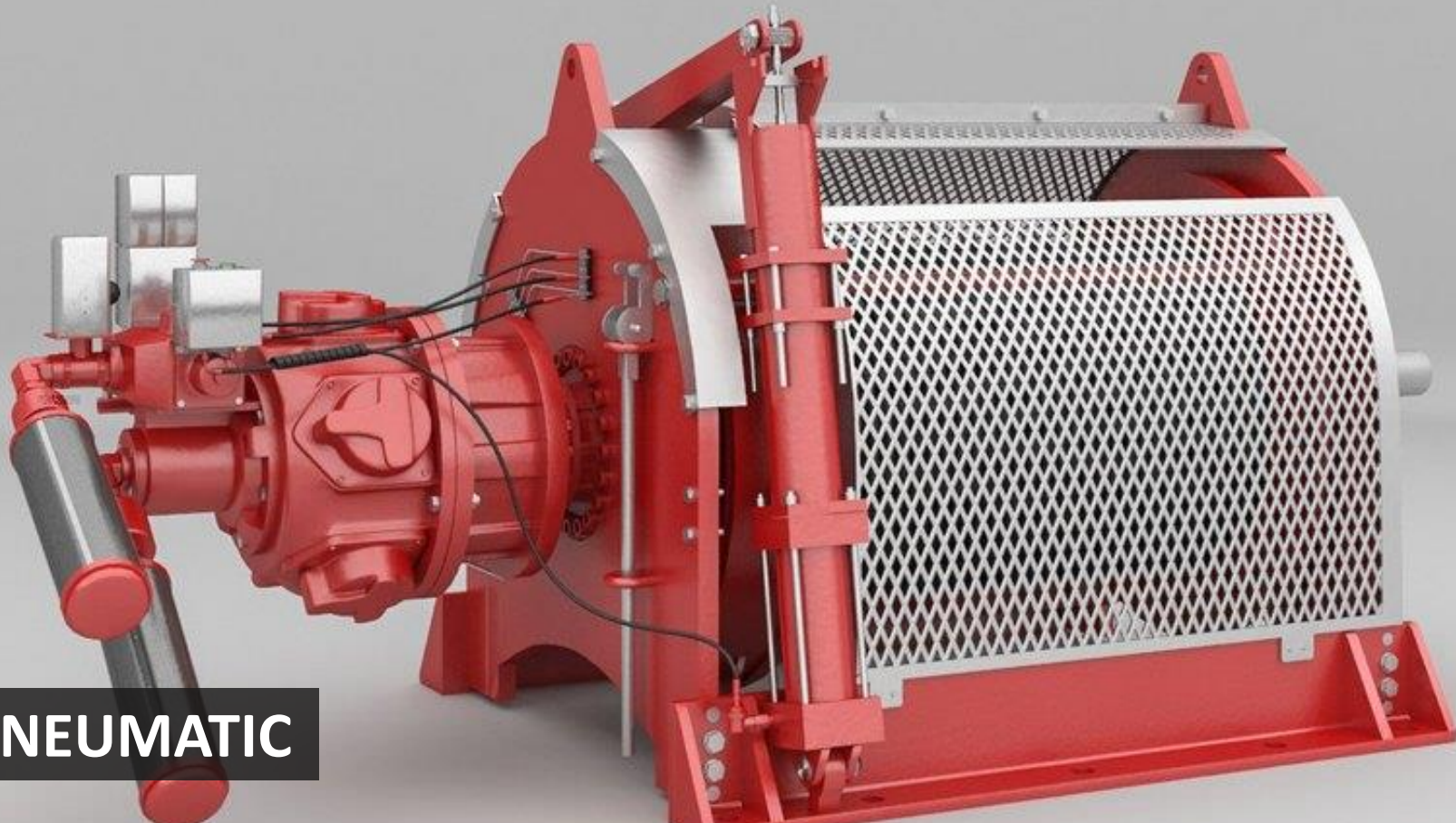
ELECTRIC

FOUR CORE BUSINESS SEGMENTS – WINCHES: ANCHOR - MOORING - MANRIDING



HYDRAULIC

FOUR CORE BUSINESS SEGMENTS – WINCHES: ANCHOR - MOORING - MANRIDING



PNEUMATIC

FOUR CORE BUSINESS SEGMENTS – HANDLING SYSTEMS

LAUNCH & RECOVERY



FOUR CORE BUSINESS SEGMENTS – HANDLING SYSTEMS

WELL INTERVENTION



INDUSTRY EXPERIENCE



RISER KNUCKLE BOOM CRANE



RISER YOKE



RISER GANTRY CRANE



RISER FEEDING MACHINE



TUBULAR FEEDING MACHINE

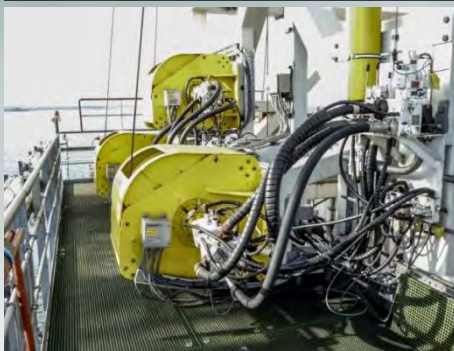
INDUSTRY EXPERIENCE



MOONPOOL TOWER UPGRADE



POD LINE WINCHES



GUIDELINE WINCHES



HYDRAULIC POWER UNIT

INDUSTRY EXPERIENCE



ICP CONNECTION TOOLS



MOORING WINCH



SCISSORS LIFT



MANRIDER WINCH



CARGO LIFT

INDUSTRY EXPERIENCE



CRANE PEDESTALS

WE PROVIDE COMPREHENSIVE DOCUMENT PREPARATION AND SUPPLY

Drawing No.	Rev.	DNV GL No.	Title
MC-K12-002	01	2027	Pedestal Adapter Calculation Report
MC-D11-100	05	2028	Pedestal - Assembly
MC-D11-101	03	2029	Pedestal
MC-D11-102	02	2030	Rotating Connector Assembly

*) Documents are discarded (not stamped) as described in short for the contents of documents are not scope of hull approval.

Drawing No. MC-D11-101/03

requirements of DNV-OS

1029

Availability of materials used in this project has been verified.
Welding plans, procedures and welder qualifications have been reviewed as required by Rule/Specifications, and confirmed to be within acceptable tolerances.
Examination during manufacture in accordance with the applicable Rules/specifications and approved plans, and machining and assembly has been carried out to verify all critical phases of welding, fitting, and examination as required by the applicable Rules and/or requirements.
The machines (etc.) have been carried out by the applicable Rules and/or requirements.
The machines are maintained in a satisfactory condition and verified in accordance with the applicable Rules and/or requirements.
Parts of the machinery/equipment used in this project have been verified in accordance with the applicable Rules and/or requirements.



TECHNICAL SUPPORT

**WE PROVIDE WORLDWIDE TECHNICAL
SUPPORT, SPARE PARTS & SERVICE**

THANK YOU

HMB
LINTECmarine